

MYT1L Rabbit Polyclonal Antibody

Description

Product type	Primary Antibody
Code	BT-AP11477
Host	Rabbit
Isotype	IgG
Size	100ul, 50ul, 20ul
Immunogen	Synthesized peptide derived from human MYT1L
Mol wt	130460
Species reactivity	Human, Mouse, Rat
Clonality	Polyclonal
Recommended application	WB
Concentration	1 mg/ml
Full name	MYT1L
Synonyms	MYT1L

This product is for research use only, not for use in human, therapeutic or diagnostic procedure.

Background

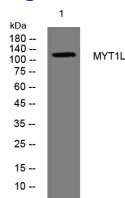
This gene encodes a member of the zinc finger superfamily of transcription factors. The encoded protein belongs to a novel class of cysteine-cysteine-histidine-cysteine zinc finger proteins that function in the developing mammalian central nervous system. Forced expression of this gene in combination with the basic helix-loop-helix transcription factor NeuroD1 and the transcription factors POU class 3 homeobox 2 and achaete-scute family basic helix-loop-helix transcription factor 1 can convert fetal and postnatal human fibroblasts into induced neuronal cells which are able to generate action potentials. Mutations in this gene have been associated with autosomal mental retardation-39 and autism spectrum disorder. Alternative splicing results in multiple variants.

Recommended Dilution

WB: 1: 500 - 1: 2000

Not yet tested in other applications.

Images



Western blot analysis of lysates from A431 cells, primary antibody was diluted at 1:1000, 4°C overnight

Storage

-20°C for 1 year