

MSK2(Phospho Thr568) Polyclonal Antibody

Description

Product type	Primary Antibody
Code	BT-AP11550
Host	Rabbit
Isotype	IgG
Size	20ul, 50ul, 100ul
Immunogen	The antiserum was produced against synthesized peptide derived from human MSK2 around the phosphorylation site of Thr568. AA range:531-580
Mol wt	85606
Species reactivity	Human, Mouse
Clonality	Polyclonal
Recommended application	WB, IHC-p, IF, ELISA
Concentration	1 mg/ml
Full name	Ribosomal protein S6 kinase alpha-4
Synonyms	Ribosomal protein S6 kinase alpha-4; RPS6KA4; MSK2; Ribosomal protein S6 kinase alpha-4; S6K-alpha-4; 90 kDa ribosomal protein S6 kinase 4; Nuclear mitogen- and stress-activated protein kinase 2; Ribosomal protein kinase B; RSKB

This product is for research use only, not for use in human, therapeutic or diagnostic procedure.

Background

This gene encodes a member of the RSK (ribosomal S6 kinase) family of serine/threonine kinases. This kinase contains 2 non-identical kinase catalytic domains and phosphorylates various substrates, including CREB1 and ATF1. The encoded protein can also phosphorylate histone H3 to regulate certain inflammatory genes. Several transcript variants encoding different isoforms have been found for this gene.

Recommended Dilution

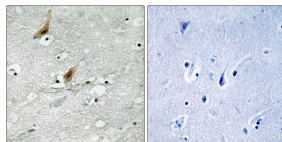
WB: 1: 500 - 1: 2000

IHC-p: 1: 100 - 1: 300

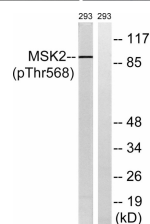
ELISA: 1: 40000

Not yet tested in other applications.

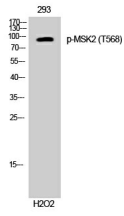
Images



Immunohistochemistry analysis of paraffin-embedded human brain, using MSK2 (Phospho-Thr568) Antibody. The picture on the right is blocked with the phospho peptide.



Western Blot analysis of 293 cells using Phospho-MSK2 (T568) Polyclonal Antibody



Western blot analysis of lysates from 293 cells treated with H₂O₂ 100uM 15', using MSK2 (Phospho-Thr568) Antibody. The lane on the right is blocked with the phospho peptide.

Storage

-20°C for 1 year

501 Changsheng S Rd, Nanhu Dist, Jiaxing, Zhejiang, China

Tel: 86 21 31007137 | E-mail: save@bt-laboratory.com | www.bt-laboratory.com