

mTOR(Phospho Thr2446) Polyclonal Antibody

Description

Product type	Primary Antibody
Code	BT-AP11567
Host	Rabbit
Isotype	IgG
Size	20ul, 50ul, 100ul
Immunogen	The antiserum was produced against synthesized peptide derived from human mTOR around the phosphorylation site of Thr2446. AA range:2412-2461
Mol wt	288892
Species reactivity	Human, Mouse, Rat
Clonality	Polyclonal
Recommended application	WB, ELISA
Concentration	1 mg/ml
Full name	Serine/threonine-protein kinase mTOR
Synonyms	Serine/threonine-protein kinase mTOR; MTOR; FRAP; FRAP1; FRAP2; RAFT1; RAPT1; Serine/threonine-protein kinase mTOR; FK506-binding protein 12-rapamycin complex-associated protein 1; FKBP12-rapamycin complex-associated protein; Mammalian target of rapamycin; mTOR; Mechanistic tar

This product is for research use only, not for use in human, therapeutic or diagnostic procedure.

Background

The protein encoded by this gene belongs to a family of phosphatidylinositol kinase-related kinases. These kinases mediate cellular responses to stresses such as DNA damage and nutrient deprivation. This protein acts as the target for the cell-cycle arrest and immunosuppressive effects of the FKBP12-rapamycin complex. The ANGPTL7 gene is located in an intron of this gene.

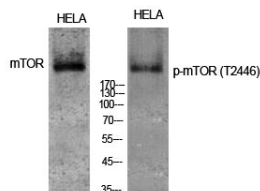
Recommended Dilution

WB: 1: 500 - 1: 2000

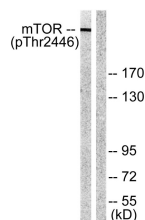
ELISA: 1: 10000

Not yet tested in other applications.

Images



Western Blot analysis of various cells using Phospho-mTOR (T2446) Polyclonal Antibody diluted at 1:1000



Western blot analysis of lysates from NIH/3T3 cells treated with Insulin 0.01U/ml 15', using mTOR (Phospho-Thr2446) Antibody. The lane on the right is blocked with the phospho peptide.

Storage

-20°C for 1 year

501 Changsheng S Rd, Nanhu Dist, Jiaxing, Zhejiang, China

Tel: 86 21 31007137 | E-mail: save@bt-laboratory.com | www.bt-laboratory.com