

MUC15 Polyclonal Antibody

Description

Product type	Primary Antibody
Code	BT-AP11573
Host	Rabbit
Isotype	IgG
Size	20ul, 50ul, 100ul
Immunogen	Synthesized peptide derived from human protein . at AA range: 180-260
Mol wt	N/A
Species reactivity	Human, Mouse
Clonality	Polyclonal
Recommended application	WB, ELISA
Concentration	1 mg/ml
Full name	Mucin-15
Synonyms	Mucin-15 ;MUC-15

This product is for research use only, not for use in human, therapeutic or diagnostic procedure.

Background

May play a role in the cell adhesion to the extracellular matrix.,PTM:Highly glycosylated (N- and O-linked carbohydrates).,sequence Translated as stop.,tissue specificity:Expressed in spleen, thymus, prostate, testis, ovary, small intestine, colon, peripheral blood leukocyte, bone marrow, lymph node and lung.,

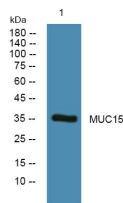
Recommended Dilution

WB: 1: 500 - 1: 2000

ELISA: 1: 5000 - 1: 20000

Not yet tested in other applications.

Images



Western blot analysis of lysates from U2OS cells, primary antibody was diluted at 1:1000, 4°C overnight

Storage

-20°C for 1 year