

## NTCP2 Rabbit Polyclonal Antibody

### Description

Product type	Primary Antibody
Code	BT-AP11586
Host	Rabbit
Isotype	IgG
Size	100ul, 50ul, 20ul
Immunogen	Synthesized peptide derived from human NTCP2
Mol wt	38280
Species reactivity	Human, Mouse, Rat
Clonality	Polyclonal
Recommended application	WB
Concentration	1 mg/ml
Full name	NTCP2
Synonyms	NTCP2

This product is for research use only, not for use in human, therapeutic or diagnostic procedure.

### Background

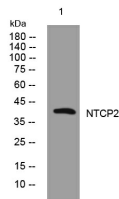
This gene encodes a sodium/bile acid cotransporter. This transporter is the primary mechanism for uptake of intestinal bile acids by apical cells in the distal ileum. Bile acids are the catabolic product of cholesterol metabolism so this protein is also critical for cholesterol homeostasis. Mutations in this gene cause primary bile acid malabsorption (PBAM); mutations in this gene may also be associated with other diseases of the liver and intestines such as familial hypertriglyceridemia (FHTG).

### Recommended Dilution

WB: 1: 500 - 1: 2000

Not yet tested in other applications.

### Images



Western blot analysis of lysates from KB cells, primary antibody was diluted at 1:1000, 4°C overnight

### Storage

-20°C for 1 year