

## NUD10 Rabbit Polyclonal Antibody

### Description

<b>Product type</b>	Primary Antibody
<b>Code</b>	BT-AP11594
<b>Host</b>	Rabbit
<b>Isotype</b>	IgG
<b>Size</b>	100ul, 50ul, 20ul
<b>Immunogen</b>	Synthesized peptide derived from human NUD10
<b>Mol wt</b>	18040
<b>Species reactivity</b>	Human, Mouse
<b>Clonality</b>	Polyclonal
<b>Recommended application</b>	WB
<b>Concentration</b>	1 mg/ml
<b>Full name</b>	NUD10
<b>Synonyms</b>	NUD10

This product is for research use only, not for use in human, therapeutic or diagnostic procedure.

### Background

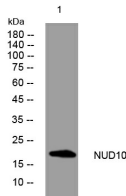
This gene is a member of the nudix (nucleoside diphosphate linked moiety X)-type motif containing family. The encoded protein is a phosphohydrolase and may regulate the turnover of diphosphoinositol polyphosphates. The turnover of these high-energy diphosphoinositol polyphosphates represents a molecular switching activity with important regulatory consequences. Molecular switching by diphosphoinositol polyphosphates may contribute to the regulation of intracellular trafficking. In some populations putative prostate cancer susceptibility alleles have been identified for this gene. Alternatively spliced transcript variants| which differ only in the 5' UTR| have been found for this gene.

### Recommended Dilution

WB: 1: 500 - 1: 2000

Not yet tested in other applications.

### Images



Western blot analysis of lysates from Jarkat cells, primary antibody was diluted at 1:1000, 4°C overnight

### Storage

-20°C for 1 year