

MYL2 Polyclonal Antibody

Description

Product type	Primary Antibody
Code	BT-AP11625
Host	Rabbit
Isotype	IgG
Size	20ul, 50ul, 100ul
Immunogen	Synthesized peptide derived from human MYL2. at AA range: 91-140
Mol wt	N/A
Species reactivity	Human, Mouse, Rat
Clonality	Polyclonal
Recommended application	WB, ELISA
Concentration	1 mg/ml
Full name	MYL2
Synonyms	MYL2; Myosin regulatory light chain 2, ventricular/cardiac muscle isoform; MLC-2; MLC-2v

This product is for research use only, not for use in human, therapeutic or diagnostic procedure.

Background

This gene encodes the regulatory light chain associated with cardiac myosin beta (or slow) heavy chain. Ca⁺ triggers the phosphorylation of regulatory light chain that in turn triggers contraction. Mutations in this gene are associated with mid-left ventricular chamber type hypertrophic cardiomyopathy.

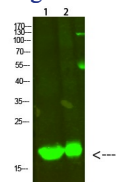
Recommended Dilution

WB: 1: 500 - 1: 2000

ELISA: 1: 10000 - 1: 20000

Not yet tested in other applications.

Images



Western Blot analysis of 1,mouse-heart 2,Hela cells using primary antibody diluted at 1:500(4°C overnight).

Secondary antibody:Goat Anti-rabbit IgG IRDye 800(diluted at 1:5000, 25°C, 1 hour)

Storage

-20°C for 1 year