

## N2DL3 Polyclonal Antibody

### Description

<b>Product type</b>	Primary Antibody
<b>Code</b>	BT-AP11675
<b>Host</b>	Rabbit
<b>Isotype</b>	IgG
<b>Size</b>	20ul, 50ul, 100ul
<b>Immunogen</b>	Synthesized peptide derived from part region of human protein
<b>Mol wt</b>	N/A
<b>Species reactivity</b>	Human, Rat, Mouse
<b>Clonality</b>	Polyclonal
<b>Recommended application</b>	WB, ELISA
<b>Concentration</b>	1 mg/ml
<b>Full name</b>	NKG2D ligand 3
<b>Synonyms</b>	NKG2D ligand 3 ;N2DL-3;NKG2DL3;ALCAN-gamma;Retinoic acid early transcript 1N

**This product is for research use only, not for use in human, therapeutic or diagnostic procedure.**

### Background

The protein encoded by this gene is one of several related ligands of the KLRK1/NKG2D receptor, which is found in primary NK cells. Binding of these ligands to the receptor activates several signal transduction pathways, including the JAK2, STAT5, and ERK pathways. The encoded protein is expressed solubly and on the surface of many tumor cells, making it potentially an important target for therapeutics.

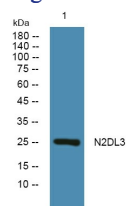
### Recommended Dilution

WB: 1: 500 - 1: 2000

ELISA: 1: 5000 - 1: 20000

Not yet tested in other applications.

### Images



Western blot analysis of lysates from SH-SY5Y cells, primary antibody was diluted at 1:1000, 4°C overnight

### Storage

-20°C for 1 year