

OST48 Rabbit Polyclonal Antibody

Description

Product type	Primary Antibody
Code	BT-AP11678
Host	Rabbit
Isotype	IgG
Size	100ul, 50ul, 20ul
Immunogen	Synthesized peptide derived from human OST48
Mol wt	50160
Species reactivity	Human, Mouse, Rat
Clonality	Polyclonal
Recommended application	WB
Concentration	1 mg/ml
Full name	OST48
Synonyms	OST48

This product is for research use only, not for use in human, therapeutic or diagnostic procedure.

Background

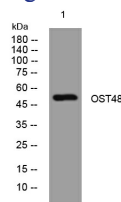
This gene encodes a component of the oligosaccharyltransferase complex which catalyzes the transfer of high-mannose oligosaccharides to asparagine residues on nascent polypeptides in the lumen of the rough endoplasmic reticulum. The protein complex co-purifies with ribosomes. The product of this gene is also implicated in the processing of advanced glycation endproducts (AGEs) which form from non-enzymatic reactions between sugars and proteins or lipids and are associated with aging and hyperglycemia.

Recommended Dilution

WB: 1: 500 - 1: 2000

Not yet tested in other applications.

Images



Western blot analysis of lysates from KB cells, primary antibody was diluted at 1:1000, 4°C overnight

Storage

-20°C for 1 year