

OTOAN Rabbit Polyclonal Antibody

Description

Product type	Primary Antibody
Code	BT-AP11679
Host	Rabbit
Isotype	IgG
Size	100ul, 50ul, 20ul
Immunogen	Synthesized peptide derived from human OTOAN
Mol wt	126830
Species reactivity	Human, Mouse
Clonality	Polyclonal
Recommended application	WB
Concentration	1 mg/ml
Full name	OTOAN
Synonyms	OTOAN

This product is for research use only, not for use in human, therapeutic or diagnostic procedure.

Background

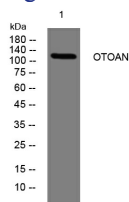
The protein encoded by this gene is specifically expressed in the inner ear and is located at the interface between the apical surface of the inner ear sensory epithelia and their overlying acellular gels. It is proposed that this protein is involved in the attachment of the inner ear acellular gels to the apical surface of the underlying nonsensory cells. Mutations in this gene are associated with autosomal recessive deafness type 22 (DFNB22). Alternatively spliced transcript variants encoding different isoforms have been found for this gene.

Recommended Dilution

WB: 1: 500 - 1: 2000

Not yet tested in other applications.

Images



Western blot analysis of lysates from A549 cells, primary antibody was diluted at 1:1000, 4°C overnight

Storage

-20°C for 1 year