

Na⁺/K⁺-ATPase alpha 1 Polyclonal Antibody

Description

Product type	Primary Antibody
Code	BT-AP11683
Host	Rabbit
Isotype	IgG
Size	20ul, 50ul, 100ul
Immunogen	The antiserum was produced against synthesized peptide derived from rat ATP1 alpha1/Na ⁺ K ⁺ ATPase1. AA range:15-64
Mol wt	113054
Species reactivity	Rat
Clonality	Polyclonal
Recommended application	WB, IF, ICC, ELISA
Concentration	1 mg/ml
Full name	Sodium/potassium-transporting ATPase subunit alpha-1
Synonyms	Sodium/potassium-transporting ATPase subunit alpha-1; ATP1A1; Sodium/potassium-transporting ATPase subunit alpha-1; Na ⁺ /K ⁺ ATPase alpha-1 subunit; Sodium pump subunit alpha-1

This product is for research use only, not for use in human, therapeutic or diagnostic procedure.

Background

The ATPase Na⁺/K⁺ transporting subunit alpha 1 encoded by ATP1A1 belongs to the family of P-type cation transport ATPases, and to the subfamily of Na⁺/K⁺ -ATPases. Na⁺/K⁺ -ATPase is an integral membrane protein responsible for establishing and maintaining the electrochemical gradients of Na and K ions across the plasma membrane. These gradients are essential for osmoregulation, for sodium-coupled transport of a variety of organic and inorganic molecules, and for electrical excitability of nerve and muscle. This enzyme is composed of two subunits, a large catalytic subunit (alpha) and a smaller glycoprotein subunit (beta). The catalytic subunit of Na⁺/K⁺ -ATPase is encoded by multiple genes. This gene encodes an alpha 1 subunit. Multiple transcript variants encoding different isoforms have been found for this gene.

Recommended Dilution

WB: 1: 500 - 1: 2000

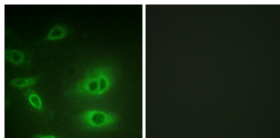
IF: 1: 200 - 1: 1000

ICC: 1: 200 - 1: 1000

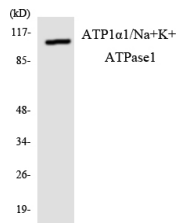
ELISA: 1: 40000

Not yet tested in other applications.

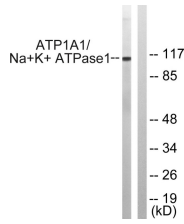
Images



Immunofluorescence analysis of HeLa cells, using ATP1 alpha1/Na⁺K⁺ ATPase1 Antibody. The picture on the right is blocked with the synthesized peptide.

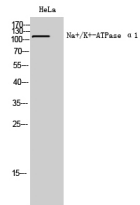


Western Blot analysis of HeLa cells using Na⁺/K⁺-ATPase α1 Polyclonal Antibody



Western blot analysis of lysates from HeLa cells, using ATP1 alpha1/Na⁺K⁺ ATPase1 Antibody.

The lane on the right is blocked with the synthesized peptide.



Western blot analysis of the lysates from RAW264.7 cells using ATP1α1/Na⁺K⁺ ATPase1 antibody.

Storage

-20°C for 1 year

501 Changsheng S Rd, Nanhu Dist, Jiaxing, Zhejiang, China

Tel: 86 21 31007137 | E-mail: save@bt-laboratory.com | www.bt-laboratory.com