

NANO2 Polyclonal Antibody

Description

Product type	Primary Antibody
Code	BT-AP11696
Host	Rabbit
Isotype	IgG
Size	20ul, 50ul, 100ul
Immunogen	Synthesized peptide derived from human protein . at AA range: 10-90
Mol wt	N/A
Species reactivity	Human, Mouse
Clonality	Polyclonal
Recommended application	WB, ELISA
Concentration	1 mg/ml
Full name	Nanos homolog 2
Synonyms	Nanos homolog 2 ;NOS-2

This product is for research use only, not for use in human, therapeutic or diagnostic procedure.

Background

The Nanos-type zinc finger is composed of two C2HC motifs, each motif binding one molecule of zinc. It is essential for the translation repression activity of the protein.,Required to support proliferation and self-renewal of proximal germ cells in males only. Probably regulates translation of specific mRNAs by associating with the 3'-UTR of mRNA targets. Essential for spermatogonia formation.,Belongs to the nanos family.,Contains 1 nanos-type zinc finger.,

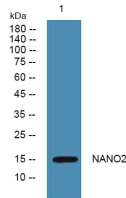
Recommended Dilution

WB: 1: 500 - 1: 2000

ELISA: 1: 5000 - 1: 20000

Not yet tested in other applications.

Images



Western blot analysis of lysates from Jarkat cells, primary antibody was diluted at 1:1000, 4°C overnight

Storage

-20°C for 1 year