

## p53 Rabbit Polyclonal Antibody

### Description

<b>Product type</b>	Primary Antibody
<b>Code</b>	BT-AP11726
<b>Host</b>	Rabbit
<b>Isotype</b>	IgG
<b>Size</b>	100ul, 50ul, 20ul
<b>Immunogen</b>	The antiserum was produced against synthesized peptide derived from human p53. AA range:336-385
<b>Mol wt</b>	43653
<b>Species reactivity</b>	Human, Mouse, Rat
<b>Clonality</b>	Polyclonal
<b>Recommended application</b>	WB, IHC-p, IF, ELISA
<b>Concentration</b>	1 mg/ml
<b>Full name</b>	Cellular tumor antigen p53
<b>Synonyms</b>	Cellular tumor antigen p53; TP53; P53; Cellular tumor antigen p53; Antigen NY-CO-13; Phosphoprotein p53; Tumor suppressor p53

**This product is for research use only, not for use in human, therapeutic or diagnostic procedure.**

### Background

This gene encodes a tumor suppressor protein containing transcriptional activation| DNA binding| and oligomerization domains. The encoded protein responds to diverse cellular stresses to regulate expression of target genes| thereby inducing cell cycle arrest| apoptosis| senescence| DNA repair| or changes in metabolism. Mutations in this gene are associated with a variety of human cancers| including hereditary cancers such as Li-Fraumeni syndrome. Alternative splicing of this gene and the use of alternate promoters result in multiple transcript variants and isoforms. Additional isoforms have also been shown to result from the use of alternate translation initiation codons (PMIDs: 12032546| 20937277).

### Recommended Dilution

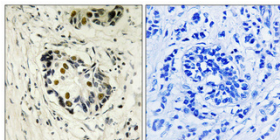
WB: 1: 500 - 1: 2000

IHC-p: 1: 100 - 1: 300

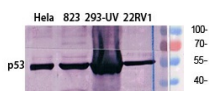
ELISA: 1: 40000

Not yet tested in other applications.

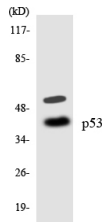
### Images



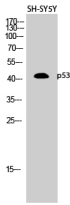
Immunohistochemical analysis of paraffin-embedded Human breast cancer. Antibody was diluted at 1:100(4°C overnight). High-pressure and temperature Tris-EDTA,pH8.0 was used for antigen retrieval. Negative control (right) obtained from antibody was pre-absorbed by immunogen peptide.



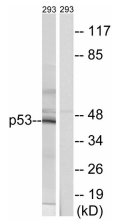
Western Blot analysis of various cells using p53 Polyclonal Antibody diluted at 1:1000



Western Blot analysis of SH-SY5Y cells using p53 Polyclonal Antibody diluted at 1:1000



Western blot analysis of lysates from 293 cells, using p53 Antibody. The lane on the right is blocked with the synthesized peptide.



Western blot analysis of the lysates from K562 cells using p53 antibody.

### Storage

-20°C for 1 year

501 Changsheng S Rd, Nanhu Dist, Jiaxing, Zhejiang, China

Tel: 86 21 31007137 | E-mail: [save@bt-laboratory.com](mailto:save@bt-laboratory.com) | [www.bt-laboratory.com](http://www.bt-laboratory.com)