

NDUA5 Polyclonal Antibody

Description

Product type	Primary Antibody
Code	BT-AP11752
Host	Rabbit
Isotype	IgG
Size	20ul, 50ul, 100ul
Immunogen	Synthesized peptide derived from human protein . at AA range: 10-90
Mol wt	N/A
Species reactivity	Human, Mouse
Clonality	Polyclonal
Recommended application	WB, ELISA
Concentration	1 mg/ml
Full name	NADH dehydrogenase [ubiquinone] 1 alpha subcomplex subunit 5
Synonyms	NADH dehydrogenase [ubiquinone] 1 alpha subcomplex subunit 5 ;Complex I subunit B13;Complex I-13kD-B;CI-13kD-B;NADH-ubiquinone oxidoreductase 13 kDa-B subunit

This product is for research use only, not for use in human, therapeutic or diagnostic procedure.

Background

This nuclear gene encodes a conserved protein that comprises the B13 subunit of complex I of the mitochondrial respiratory chain. The encoded protein localizes to the inner mitochondrial membrane, where it is thought to aid in the transfer of electrons from NADH to ubiquinone. Alternative splicing results in multiple transcript variants. There are numerous pseudogenes of this gene on chromosomes 1, 3, 6, 8, 9, 11, 12, and 16.

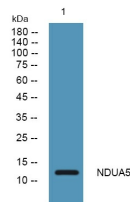
Recommended Dilution

WB: 1: 500 - 1: 2000

ELISA: 1: 5000 - 1: 20000

Not yet tested in other applications.

Images



Western blot analysis of lysates from HCT116 cells, primary antibody was diluted at 1:1000, 4°C overnight

Storage

-20°C for 1 year