

## NDUA6 Polyclonal Antibody

### Description

Product type	Primary Antibody
Code	BT-AP11753
Host	Rabbit
Isotype	IgG
Size	20ul, 50ul, 100ul
Immunogen	Synthesized peptide derived from human protein . at AA range: 20-100
Mol wt	N/A
Species reactivity	Human, Mouse
Clonality	Polyclonal
Recommended application	WB, ELISA
Concentration	1 mg/ml
Full name	NADH dehydrogenase [ubiquinone] 1 alpha subcomplex subunit 6
Synonyms	NADH dehydrogenase [ubiquinone] 1 alpha subcomplex subunit 6 ;Complex I-B14;CI-B14;LYR motif-containing protein 6;NADH-ubiquinone oxidoreductase B14 subunit

This product is for research use only, not for use in human, therapeutic or diagnostic procedure.

### Background

Accessory subunit of the mitochondrial membrane respiratory chain NADH dehydrogenase (Complex I), that is believed to be not involved in catalysis. Complex I functions in the transfer of electrons from NADH to the respiratory chain. The immediate electron acceptor for the enzyme is believed to be ubiquinone.,Belongs to the complex I LYR family.,subunit:Mammalian complex I is composed of 45 different subunits.,

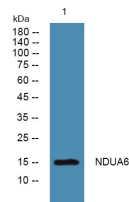
### Recommended Dilution

WB: 1: 500 - 1: 2000

ELISA: 1: 5000 - 1: 20000

Not yet tested in other applications.

### Images



Western blot analysis of lysates from SH-SY5Y cells, primary antibody was diluted at 1:1000, 4°C overnight

### Storage

-20°C for 1 year