

NDUB8 Polyclonal Antibody

Description

Product type	Primary Antibody
Code	BT-AP11764
Host	Rabbit
Isotype	IgG
Size	20ul, 50ul, 100ul
Immunogen	Synthesized peptide derived from human protein . at AA range: 120-200
Mol wt	N/A
Species reactivity	Human, Mouse
Clonality	Polyclonal
Recommended application	WB, ELISA
Concentration	1 mg/ml
Full name	NADH dehydrogenase [ubiquinone] 1 beta subcomplex subunit 8, mitochondrial
Synonyms	NADH dehydrogenase [ubiquinone] 1 beta subcomplex subunit 8, mitochondrial ;Complex I-ASHI;CI-ASHI;NADH-ubiquinone oxidoreductase ASHI subunit

This product is for research use only, not for use in human, therapeutic or diagnostic procedure.

Background

Accessory subunit of the mitochondrial membrane respiratory chain NADH dehydrogenase (Complex I), that is believed to be not involved in catalysis. Complex I functions in the transfer of electrons from NADH to the respiratory chain. The immediate electron acceptor for the enzyme is believed to be ubiquinone.,Belongs to the complex I NDUF8 subunit family.,subunit:Complex I is composed of 45 different subunits.,

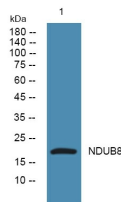
Recommended Dilution

WB: 1: 500 - 1: 2000

ELISA: 1: 5000 - 1: 20000

Not yet tested in other applications.

Images



Western blot analysis of lysates from PC12 cells, primary antibody was diluted at 1:1000, 4°C overnight

Storage

-20°C for 1 year