

NDUBB Polyclonal Antibody

Description

Product type	Primary Antibody
Code	BT-AP11765
Host	Rabbit
Isotype	IgG
Size	20ul, 50ul, 100ul
Immunogen	Synthesized peptide derived from human protein . at AA range: 70-150
Mol wt	N/A
Species reactivity	Human, Mouse
Clonality	Polyclonal
Recommended application	WB, ELISA
Concentration	1 mg/ml
Full name	NADH dehydrogenase [ubiquinone] 1 beta subcomplex subunit 11, mitochondrial
Synonyms	NADH dehydrogenase [ubiquinone] 1 beta subcomplex subunit 11, mitochondrial ;Complex I-ESSS;CI-ESSS;NADH-ubiquinone oxidoreductase ESSS subunit;Neuronal protein 17.3;Np17.3;p17.3

This product is for research use only, not for use in human, therapeutic or diagnostic procedure.

Background

NDUFB11 is a component of mitochondrial complex I. Complex I catalyzes the first step in the electron transport chain, the transfer of 2 electrons from NADH to ubiquinone, coupled to the translocation of 4 protons across the membrane (Carroll et al., 2002)

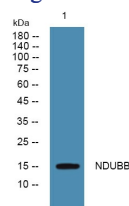
Recommended Dilution

WB: 1: 500 - 1: 2000

ELISA: 1: 5000 - 1: 20000

Not yet tested in other applications.

Images



Western blot analysis of lysates from SH-SY5Y cells, primary antibody was diluted at 1:1000, 4°C overnight

Storage

-20°C for 1 year