

## PACRG Rabbit Polyclonal Antibody

### Description

<b>Product type</b>	Primary Antibody
<b>Code</b>	BT-AP11766
<b>Host</b>	Rabbit
<b>Isotype</b>	IgG
<b>Size</b>	100ul, 50ul, 20ul
<b>Immunogen</b>	Synthesized peptide derived from human PACRG
<b>Mol wt</b>	32560
<b>Species reactivity</b>	Human, Mouse
<b>Clonality</b>	Polyclonal
<b>Recommended application</b>	WB
<b>Concentration</b>	1 mg/ml
<b>Full name</b>	PACRG
<b>Synonyms</b>	PACRG

This product is for research use only, not for use in human, therapeutic or diagnostic procedure.

### Background

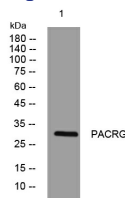
This gene encodes a protein that is conserved across metazoans. In vertebrates| this gene is linked in a head-to-head arrangement with the adjacent parkin gene| which is associated with autosomal recessive juvenile Parkinson's disease. These genes are co-regulated in various tissues and they share a bi-directional promoter. Both genes are associated with susceptibility to leprosy. The parkin co-regulated gene protein forms a large molecular complex with chaperones| including heat shock proteins 70 and 90| and chaperonin components. This protein is also a component of Lewy bodies in Parkinson's disease patients| and it suppresses unfolded Pael receptor-induced neuronal cell death. Multiple transcript variants encoding different isoforms have been found for this gene.

### Recommended Dilution

WB: 1: 500 - 1: 2000

Not yet tested in other applications.

### Images



Western blot analysis of lysates from U2OS cells, primary antibody was diluted at 1:1000, 4°C overnight

### Storage

-20°C for 1 year