

## PBIP1 Rabbit Polyclonal Antibody

### Description

Product type	Primary Antibody
Code	BT-AP11796
Host	Rabbit
Isotype	IgG
Size	100ul, 50ul, 20ul
Immunogen	Synthesized peptide derived from human PBIP1
Mol wt	80410
Species reactivity	Human, Mouse, Rat
Clonality	Polyclonal
Recommended application	WB
Concentration	1 mg/ml
Full name	PBIP1
Synonyms	PBIP1

This product is for research use only, not for use in human, therapeutic or diagnostic procedure.

### Background

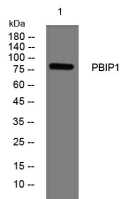
The protein encoded by this gene interacts with the PBX1 homeodomain protein| inhibiting its transcriptional activation potential by preventing its binding to DNA. The encoded protein| which is primarily cytosolic but can shuttle to the nucleus| also can interact with estrogen receptors alpha and beta and promote the proliferation of breast cancer| brain tumors| and lung cancer. Several transcript variants encoding different isoforms have been found for this gene. More variants exist| but their full-length natures have yet to be determined.

### Recommended Dilution

WB: 1: 500 - 1: 2000

Not yet tested in other applications.

### Images



Western blot analysis of lysates from SW480 cells, primary antibody was diluted at 1:1000, 4°C overnight

### Storage

-20°C for 1 year