

PC11X Rabbit Polyclonal Antibody

Description

Product type	Primary Antibody
Code	BT-AP11802
Host	Rabbit
Isotype	IgG
Size	100ul, 50ul, 20ul
Immunogen	Synthesized peptide derived from human PC11X
Mol wt	148170
Species reactivity	Human, Rat, Mouse
Clonality	Polyclonal
Recommended application	WB
Concentration	1 mg/ml
Full name	PC11X
Synonyms	PC11X

This product is for research use only, not for use in human, therapeutic or diagnostic procedure.

Background

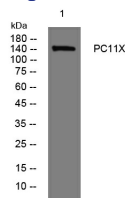
This gene belongs to the protocadherin gene family| a subfamily of the cadherin superfamily. The encoded protein consists of an extracellular domain containing 7 cadherin repeats| a transmembrane domain and a cytoplasmic tail that differs from those of the classical cadherins. The gene is located in a major X/Y block of homology and its Y homolog| despite divergence leading to coding region changes| is the most closely related cadherin family member. The protein is thought to play a fundamental role in cell-cell recognition essential for the segmental development and function of the central nervous system. Disruption of this gene may be associated with developmental dyslexia. Alternative splicing results in multiple transcript variants.

Recommended Dilution

WB: 1: 500 - 1: 2000

Not yet tested in other applications.

Images



Western blot analysis of lysates from CACO2 cells, primary antibody was diluted at 1:1000, 4°C overnight

Storage

-20°C for 1 year