

## PCD17 Rabbit Polyclonal Antibody

### Description

Product type	Primary Antibody
Code	BT-AP11806
Host	Rabbit
Isotype	IgG
Size	100ul, 50ul, 20ul
Immunogen	Synthesized peptide derived from human PCD17
Mol wt	127490
Species reactivity	Human, Rat, Mouse
Clonality	Polyclonal
Recommended application	WB
Concentration	1 mg/ml
Full name	PCD17
Synonyms	PCD17

This product is for research use only, not for use in human, therapeutic or diagnostic procedure.

### Background

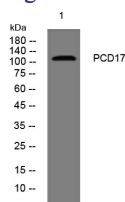
This gene belongs to the protocadherin gene family| a subfamily of the cadherin superfamily. The encoded protein contains six extracellular cadherin domains| a transmembrane domain| and a cytoplasmic tail differing from those of the classical cadherins. The encoded protein may play a role in the establishment and function of specific cell-cell connections in the brain.

### Recommended Dilution

WB: 1: 500 - 1: 2000

Not yet tested in other applications.

### Images



Western blot analysis of lysates from U2OS cells, primary antibody was diluted at 1:1000, 4°C overnight

### Storage

-20°C for 1 year

501 Changsheng S Rd, Nanhu Dist, Jiaxing, Zhejiang, China

Tel: 86 21 31007137 | E-mail: [save@bt-laboratory.com](mailto:save@bt-laboratory.com) | [www.bt-laboratory.com](http://www.bt-laboratory.com)