

Net(Phospho Ser357) Polyclonal Antibody

Description

Product type	Primary Antibody
Code	BT-AP11812
Host	Rabbit
Isotype	IgG
Size	20ul, 50ul, 100ul
Immunogen	The antiserum was produced against synthesized peptide derived from human Elk3 around the phosphorylation site of Ser357. AA range:323-372
Mol wt	44240
Species reactivity	Human, Mouse, Monkey
Clonality	Polyclonal
Recommended application	WB, IHC-p, IF, ICC, ELISA
Concentration	1 mg/ml
Full name	ETS domain-containing protein Elk-3
Synonyms	ETS domain-containing protein Elk-3; ELK3; NET; SAP2; ETS domain-containing protein Elk-3; ETS-related protein ERP; ETS-related protein NET; Serum response factor accessory protein 2; SAP-2; SRF accessory protein 2

This product is for research use only, not for use in human, therapeutic or diagnostic procedure.

Background

This gene encodes a member of the ETS-domain transcription factor family and the ternary complex factor (TCF) subfamily. Proteins in this subfamily regulate transcription when recruited by serum response factor to bind to serum response elements. This protein is activated by signal-induced phosphorylation; studies in rodents suggest that it is a transcriptional inhibitor in the absence of Ras, but activates transcription when Ras is present. Alternate splicing results in multiple transcript variants.

Recommended Dilution

WB: 1: 500 - 1: 2000

IHC-p: 1: 100 - 1: 300

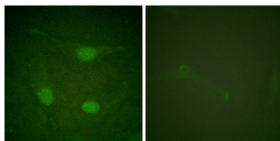
IF: 1: 200 - 1: 1000

ICC: 1: 200 - 1: 1000

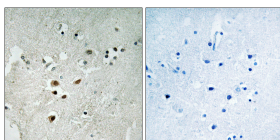
ELISA: 1: 20000

Not yet tested in other applications.

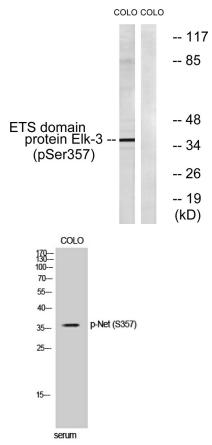
Images



Immunofluorescence analysis of HeLa cells, using Elk3 (Phospho-Ser357) Antibody. The picture on the right is blocked with the phospho peptide.



Immunohistochemistry analysis of paraffin-embedded human brain, using Elk3 (Phospho-Ser357) Antibody. The picture on the right is blocked with the phospho peptide.



Western Blot analysis of COLO cells using Phospho-Net (S357) Polyclonal Antibody

Western blot analysis of lysates from COLO205 cells treated with serum 20% 15', using Elk3 (Phospho-Ser357) Antibody. The lane on the right is blocked with the phospho peptide.

Storage

-20°C for 1 year

501 Changsheng S Rd, Nanhu Dist, Jiaxing, Zhejiang, China

Tel: 86 21 31007137 | E-mail: save@bt-laboratory.com | www.bt-laboratory.com