

PCDG1 Rabbit Polyclonal Antibody

Description

Product type	Primary Antibody
Code	BT-AP11831
Host	Rabbit
Isotype	IgG
Size	100ul, 50ul, 20ul
Immunogen	Synthesized peptide derived from human PCDG1
Mol wt	102410
Species reactivity	Human, Rat, Mouse
Clonality	Polyclonal
Recommended application	WB
Concentration	1 mg/ml
Full name	PCDG1
Synonyms	PCDG1

This product is for research use only, not for use in human, therapeutic or diagnostic procedure.

Background

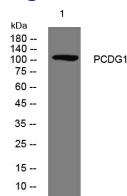
This gene is a member of the protocadherin gamma gene cluster| one of three related clusters tandemly linked on chromosome five. These gene clusters have an immunoglobulin-like organization| suggesting that a novel mechanism may be involved in their regulation and expression. The gamma gene cluster includes 22 genes divided into 3 subfamilies. Subfamily A contains 12 genes| subfamily B contains 7 genes and 2 pseudogenes| and the more distantly related subfamily C contains 3 genes. The tandem array of 22 large| variable region exons are followed by a constant region| containing 3 exons shared by all genes in the cluster. Each variable region exon encodes the extracellular region| which includes 6 cadherin ectodomains and a transmembrane region. The constant region exons encode the common cytoplasmic region. These neural cadherin-like cell adhesion proteins most likely play a critical role in the establishment and function of specific cell-cell connections in the brain. Alternative splicing has been described for the gamma cluster genes.

Recommended Dilution

WB: 1: 500 - 1: 2000

Not yet tested in other applications.

Images



Western blot analysis of lysates from CACO2 cells, primary antibody was diluted at 1:1000, 4°C overnight

Storage

-20°C for 1 year