

PCSK6 Rabbit Polyclonal Antibody

Description

Product type	Primary Antibody
Code	BT-AP11846
Host	Rabbit
Isotype	IgG
Size	100ul, 50ul, 20ul
Immunogen	Synthesized peptide derived from human PCSK6
Mol wt	N/A
Species reactivity	Human, Rat
Clonality	Polyclonal
Recommended application	WB
Concentration	1 mg/ml
Full name	PCSK6
Synonyms	PCSK6; Proprotein convertase subtilisin/kexin type 6; EC 3.4.21.-; Paired basic amino acid cleaving enzyme 4; Subtilisin-like proprotein convertase 4; SPC4; Subtilisin/kexin-like protease PACE4

This product is for research use only, not for use in human, therapeutic or diagnostic procedure.

Background

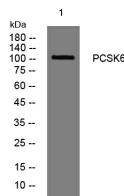
This gene encodes a member of the subtilisin-like proprotein convertase family which includes proteases that process protein and peptide precursors trafficking through regulated or constitutive branches of the secretory pathway. The encoded protein undergoes an initial autocatalytic processing event in the ER to generate a heterodimer which exits the ER and sorts to the trans-Golgi network where a second autocatalytic event takes place and the Catalytic activity is acquired. The encoded protease is constitutively secreted into the extracellular matrix and expressed in many tissues including neuroendocrine liver gut and brain. This gene encodes one of the seven basic amino acid-specific members which cleave their substrates at single or paired basic residues. Some of its substrates include transforming growth factor beta related proteins proalbumin and von Willebrand factor. This gene is thought to play a role in tumor progression and left-right patterning. Alternatively spliced transcript variants encoding different isoforms have been identified.

Recommended Dilution

WB: 1: 500 - 1: 2000

Not yet tested in other applications.

Images



Western blot analysis of lysates from 3T3 cells, primary antibody was diluted at 1:1000, 4°C overnight

Storage

-20°C for 1 year