

PDE6D Rabbit Polyclonal Antibody

Description

Product type	Primary Antibody
Code	BT-AP11854
Host	Rabbit
Isotype	IgG
Size	100ul, 50ul, 20ul
Immunogen	Synthesized peptide derived from human PDE6D
Mol wt	16500
Species reactivity	Human, Mouse
Clonality	Polyclonal
Recommended application	WB
Concentration	1 mg/ml
Full name	PDE6D
Synonyms	PDE6D

This product is for research use only, not for use in human, therapeutic or diagnostic procedure.

Background

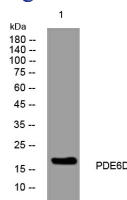
This gene encodes the delta subunit of rod-specific photoreceptor phosphodiesterase (PDE) a key enzyme in the phototransduction cascade. A similar protein in cow functions in solubilizing membrane-bound PDE. In addition to its role in the PDE complex the encoded protein is thought to bind to prenyl groups of proteins to target them to subcellular organelles called cilia. Mutations in this gene are associated with Joubert syndrome-22. Alternative splicing results in multiple splice variants.

Recommended Dilution

WB: 1: 500 - 1: 2000

Not yet tested in other applications.

Images



Western blot analysis of lysates from HeLa cells, primary antibody was diluted at 1:1000, 4°C overnight

Storage

-20°C for 1 year