

NIP7 Polyclonal Antibody

Description

Product type	Primary Antibody
Code	BT-AP11876
Host	Rabbit
Isotype	IgG
Size	20ul, 50ul, 100ul
Immunogen	Synthesized peptide derived from human protein . at AA range: 90-170
Mol wt	N/A
Species reactivity	Human, Mouse, Rat
Clonality	Polyclonal
Recommended application	WB, ELISA
Concentration	1 mg/ml
Full name	60S ribosome subunit biogenesis protein NIP7 homolog
Synonyms	60S ribosome subunit biogenesis protein NIP7 homolog ;KD93

This product is for research use only, not for use in human, therapeutic or diagnostic procedure.

Background

Required for proper 27S pre-rRNA processing and 60S ribosome subunit assembly.,Belongs to the NIP7 family.,Contains 1 PUA domain.,subunit:Monomer. Interacts with pre-ribosome complex. May bind to RNA (By similarity). Interacts with NOL8. May interact with SBDS.,

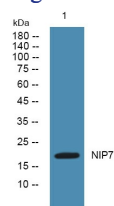
Recommended Dilution

WB: 1: 500 - 1: 2000

ELISA: 1: 5000 - 1: 20000

Not yet tested in other applications.

Images



Western blot analysis of lysates from SH-SY5Y cells, primary antibody was diluted at 1:1000, 4°C overnight

Storage

-20°C for 1 year