

PGM5 Rabbit Polyclonal Antibody

Description

Product type	Primary Antibody
Code	BT-AP11904
Host	Rabbit
Isotype	IgG
Size	100ul, 50ul, 20ul
Immunogen	Synthesized peptide derived from human PGM5
Mol wt	N/A
Species reactivity	Human, Mouse
Clonality	Polyclonal
Recommended application	WB
Concentration	1 mg/ml
Full name	PGM5
Synonyms	PGM5; Phosphoglucomutase-like protein 5; Aciculin; Phosphoglucomutase-related protein; PGM-RP

This product is for research use only, not for use in human, therapeutic or diagnostic procedure.

Background

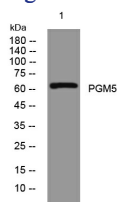
Phosphoglucomutases (EC 5.2.2.2.) such as PGM5 are phosphotransferases involved in interconversion of glucose-1-phosphate and glucose-6-phosphate. PGM activity is essential in formation of carbohydrates from glucose-6-phosphate and in formation of glucose-6-phosphate from galactose and glycogen (Edwards et al. | 1995)

Recommended Dilution

WB: 1: 500 - 1: 2000

Not yet tested in other applications.

Images



Western blot analysis of lysates from U2OS cells, primary antibody was diluted at 1:1000, 4°C overnight

Storage

-20°C for 1 year

501 Changsheng S Rd, Nanhu Dist, Jiaxing, Zhejiang, China

Tel: 86 21 31007137 | E-mail: save@bt-laboratory.com | www.bt-laboratory.com