

NOCT Polyclonal Antibody

Description

Product type	Primary Antibody
Code	BT-AP11938
Host	Rabbit
Isotype	IgG
Size	20ul, 50ul, 100ul
Immunogen	Synthesized peptide derived from human protein . at AA range: 100-180
Mol wt	N/A
Species reactivity	Human, Mouse, Rat
Clonality	Polyclonal
Recommended application	WB, ELISA
Concentration	1 mg/ml
Full name	Nocturnin
Synonyms	Nocturnin ;CCR4 protein homolog

This product is for research use only, not for use in human, therapeutic or diagnostic procedure.

Background

The protein encoded by this gene is highly similar to Nocturnin, a gene identified as a circadian clock regulated gene in *Xenopus laevis*. This protein and Nocturnin protein share similarity with the C-terminal domain of a yeast transcription factor, carbon catabolite repression 4 (CCR4). The mRNA abundance of a similar gene in mouse has been shown to exhibit circadian rhythmicity, which suggests a role for this protein in clock function or as a circadian clock effector.

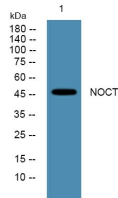
Recommended Dilution

WB: 1: 500 - 1: 2000

ELISA: 1: 5000 - 1: 20000

Not yet tested in other applications.

Images



Western blot analysis of lysates from PC12 cells, primary antibody was diluted at 1:1000, 4°C overnight

Storage

-20°C for 1 year