

PIGZ Rabbit Polyclonal Antibody

Description

Product type	Primary Antibody
Code	BT-AP11950
Host	Rabbit
Isotype	IgG
Size	100ul, 50ul, 20ul
Immunogen	Synthesized peptide derived from human PIGZ
Mol wt	63690
Species reactivity	Human, Mouse
Clonality	Polyclonal
Recommended application	WB
Concentration	1 mg/ml
Full name	PIGZ
Synonyms	PIGZ

This product is for research use only, not for use in human, therapeutic or diagnostic procedure.

Background

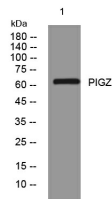
The glycosylphosphatidylinositol (GPI) anchor is a glycolipid found on many blood cells that serves to anchor proteins to the cell surface. This gene encodes a protein that is localized to the endoplasmic reticulum and is involved in GPI anchor biosynthesis. As shown for the yeast homolog which is a member of a family of dolichol-phosphate-mannose (Dol-P-Man)-dependent mannosyltransferases this protein can also add a side-branching fourth mannose to GPI precursors during the assembly of GPI anchors.

Recommended Dilution

WB: 1: 500 - 1: 2000

Not yet tested in other applications.

Images



Western blot analysis of lysates from THP-1 cells, primary antibody was diluted at 1:1000, 4°C overnight

Storage

-20°C for 1 year