

PIWL4 Rabbit Polyclonal Antibody

Description

Product type	Primary Antibody
Code	BT-AP11954
Host	Rabbit
Isotype	IgG
Size	100ul, 50ul, 20ul
Immunogen	Synthesized peptide derived from human PIWL4
Mol wt	93720
Species reactivity	Human, Mouse, Rat
Clonality	Polyclonal
Recommended application	WB
Concentration	1 mg/ml
Full name	PIWL4
Synonyms	PIWL4

This product is for research use only, not for use in human, therapeutic or diagnostic procedure.

Background

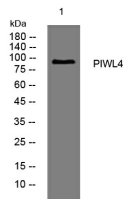
PIWL4 belongs to the Argonaute family of proteins which function in development and maintenance of germline stem cells (Sasaki et al. | 2003

Recommended Dilution

WB: 1: 500 - 1: 2000

Not yet tested in other applications.

Images



Western blot analysis of lysates from 293T cells, primary antibody was diluted at 1:1000, 4°C overnight

Storage

-20°C for 1 year

501 Changsheng S Rd, Nanhu Dist, Jiaxing, Zhejiang, China

Tel: 86 21 31007137 | E-mail: save@bt-laboratory.com | www.bt-laboratory.com