

NOS3(Phospho Ser615) Polyclonal Antibody

Description

Product type	Primary Antibody
Code	BT-AP11960
Host	Rabbit
Isotype	IgG
Size	20ul, 50ul, 100ul
Immunogen	The antiserum was produced against synthesized peptide derived from human eNOS around the phosphorylation site of Ser615. AA range:581-630
Mol wt	133289
Species reactivity	Human, Mouse, Rat
Clonality	Polyclonal
Recommended application	WB, ELISA
Concentration	1 mg/ml
Full name	Nitric oxide synthase endothelial
Synonyms	Nitric oxide synthase endothelial; NOS3; Nitric oxide synthase; endothelial; Constitutive NOS; eNOS; EC-NOS; Endothelial NOS; eNOS; NOS type III; NOSIII

This product is for research use only, not for use in human, therapeutic or diagnostic procedure.

Background

Nitric oxide is a reactive free radical which acts as a biologic mediator in several processes, including neurotransmission and antimicrobial and antitumoral activities. Nitric oxide is synthesized from L-arginine by nitric oxide synthases. Variations in this gene are associated with susceptibility to coronary spasm. Multiple transcript variants encoding different isoforms have been found for this gene.

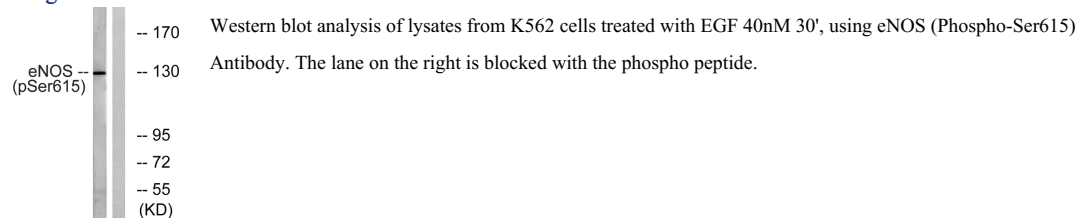
Recommended Dilution

WB: 1: 500 - 1: 2000

ELISA: 1: 40000

Not yet tested in other applications.

Images



Storage

-20°C for 1 year