

NPBW1 Polyclonal Antibody

Description

Product type	Primary Antibody
Code	BT-AP11977
Host	Rabbit
Isotype	IgG
Size	20ul, 50ul, 100ul
Immunogen	Synthesized peptide derived from human protein . at AA range: 250-330
Mol wt	N/A
Species reactivity	Human, Rat, Mouse
Clonality	Polyclonal
Recommended application	WB, ELISA
Concentration	1 mg/ml
Full name	Neuropeptides B/W receptor type 1
Synonyms	Neuropeptides B/W receptor type 1 ;G-protein coupled receptor 7

This product is for research use only, not for use in human, therapeutic or diagnostic procedure.

Background

Interacts specifically with a number of opioid ligands. Receptor for neuropeptides B and W, which may be involved in neuroendocrine system regulation, food intake and the organization of other signals. Has a higher affinity for neuropeptide B.,Belongs to the G-protein coupled receptor 1 family.,tissue specificity:Found in cerebellum and frontal cortex. Detected at high levels in hippocampus, amygdala and trachea; at moderate levels in fetal brain, pituitary gland and prostate. Not in caudate, accumbens, kidney or liver. Also detected at high levels in lung carcinoma.,

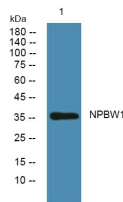
Recommended Dilution

WB: 1: 500 - 1: 2000

ELISA: 1: 5000 - 1: 20000

Not yet tested in other applications.

Images



Western blot analysis of lysates from K562 cells, primary antibody was diluted at 1:1000, 4°C overnight

Storage

-20°C for 1 year