

NPW Polyclonal Antibody

Description

Product type	Primary Antibody
Code	BT-AP11994
Host	Rabbit
Isotype	IgG
Size	20ul, 50ul, 100ul
Immunogen	Synthesized peptide derived from human protein . at AA range: 90-170
Mol wt	N/A
Species reactivity	Human, Rat
Clonality	Polyclonal
Recommended application	WB, ELISA
Concentration	1 mg/ml
Full name	Neuropeptide W
Synonyms	Neuropeptide W ;Preproprotein L8;hPPL8 [Cleaved into: Neuropeptide W-23 ;NPW23;hL8; Neuropeptide W-30 ;NPW30;hL8C]

This product is for research use only, not for use in human, therapeutic or diagnostic procedure.

Background

The product of this gene is processed into 23- and 30-amino acid neuropeptides that bind and activate two G-protein coupled receptors in the central nervous system. The neuropeptides have been shown to enhance cortisol secretion from adrenal cells through the adenylate cyclase/protein kinase A signaling cascade. The preproprotein is translated using a non-AUG initiation codon that is inferred from analyses of the mouse ortholog.

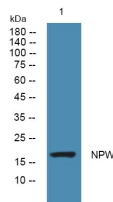
Recommended Dilution

WB: 1: 500 - 1: 2000

ELISA: 1: 5000 - 1: 20000

Not yet tested in other applications.

Images



Western blot analysis of lysates from PC12 cells, primary antibody was diluted at 1:1000, 4°C overnight

Storage

-20°C for 1 year