

NPY6R Polyclonal Antibody

Description

Product type	Primary Antibody
Code	BT-AP12000
Host	Rabbit
Isotype	IgG
Size	20ul, 50ul, 100ul
Immunogen	Synthesized peptide derived from human protein . at AA range: 190-270
Mol wt	N/A
Species reactivity	Human, Mouse
Clonality	Polyclonal
Recommended application	WB, ELISA
Concentration	1 mg/ml
Full name	Putative neuropeptide Y receptor type 6
Synonyms	Putative neuropeptide Y receptor type 6 ;NPY6-R;NPY Y1-like receptor;Putative pancreatic polypeptide receptor 2;PP2

This product is for research use only, not for use in human, therapeutic or diagnostic procedure.

Background

Could be the product of a pseudogene. According to PubMed:97066888, PubMed:97066971 and PubMed:9013614, the human NPY6R gene is an expressed pseudogene containing a premature stop codon and encoding a non-functional truncated protein missing the last transmembrane domain. A single base pair deletion relative to the mouse ortholog, results in a truncated protein lacking the seventh transmembrane domain.,When expressed, is unable to bind pancreatic polypeptide (PP), neuropeptide Y (NPY), or peptide YY (PYY), suggesting that either it is functionally inactive or that it may have acquired a pancreatic polypeptide-independent function.,Belongs to the G-protein coupled receptor 1 family.,tissue specificity:Expressed in heart, skeletal muscle, gastrointestinal tissues, spleen, brain and adrenal glands.,

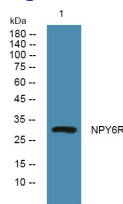
Recommended Dilution

WB: 1: 500 - 1: 2000

ELISA: 1: 5000 - 1: 20000

Not yet tested in other applications.

Images



Western blot analysis of lysates from K562 cells, primary antibody was diluted at 1:1000, 4°C overnight

Storage

-20°C for 1 year