

NR2C2 Polyclonal Antibody

Description

Product type	Primary Antibody
Code	BT-AP12009
Host	Rabbit
Isotype	IgG
Size	20ul, 50ul, 100ul
Immunogen	Synthesized peptide derived from human protein . at AA range: 410-490
Mol wt	N/A
Species reactivity	Human, Mouse, Rat
Clonality	Polyclonal
Recommended application	WB, ELISA
Concentration	1 mg/ml
Full name	Nuclear receptor subfamily 2 group C member 2
Synonyms	Nuclear receptor subfamily 2 group C member 2 ;Orphan nuclear receptor TAK1;Orphan nuclear receptor TR4;Testicular receptor 4

This product is for research use only, not for use in human, therapeutic or diagnostic procedure.

Background

This gene encodes a protein that belongs to the nuclear hormone receptor family. Members of this family act as ligand-activated transcription factors and function in many biological processes such as development, cellular differentiation and homeostasis. The activated receptor/ligand complex is translocated to the nucleus where it binds to hormone response elements of target genes. The protein encoded by this gene plays a role in protecting cells from oxidative stress and damage induced by ionizing radiation. The lack of a similar gene in mouse results in growth retardation, severe spinal curvature, subfertility, premature aging, and prostatic intraepithelial neoplasia (PIN) development. Alternative splicing results in multiple transcript variants encoding different isoforms.

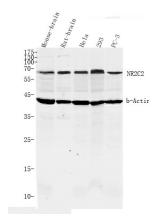
Recommended Dilution

WB: 1: 500 - 1: 2000

ELISA: 1: 5000 - 1: 20000

Not yet tested in other applications.

Images



Western Blot analysis of mouse-brain rat-brain HeLa 293 PC-3 cell lysis. Primary Antibody was diluted at 1:1000.

Secondary antibody was diluted at 1:10000

Storage

-20°C for 1 year