

NSUN5 Polyclonal Antibody

Description

Product type	Primary Antibody
Code	BT-AP12038
Host	Rabbit
Isotype	IgG
Size	20ul, 50ul, 100ul
Immunogen	Synthesized peptide derived from human protein . at AA range: 320-400
Mol wt	N/A
Species reactivity	Human, Mouse
Clonality	Polyclonal
Recommended application	WB, ELISA
Concentration	1 mg/ml
Full name	Putative methyltransferase NSUN5
Synonyms	Putative methyltransferase NSUN5 ;EC 2.1.1.-.;NOL1-related protein;NOL1R;NOL1/NOP2/Sun domain family member 5;Williams-Beuren syndrome chromosomal region 20A protein

This product is for research use only, not for use in human, therapeutic or diagnostic procedure.

Background

This gene encodes a member of an evolutionarily conserved family of proteins that may function as methyltransferases. This gene is located in a larger region of chromosome 7 that is deleted in Williams-Beuren syndrome, a multisystem developmental disorder. There are two pseudogenes for this gene located in the same region of chromosome 7. Alternative splicing results in multiple transcript variants encoding different isoforms.

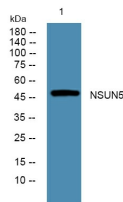
Recommended Dilution

WB: 1: 500 - 1: 2000

ELISA: 1: 5000 - 1: 20000

Not yet tested in other applications.

Images



Western blot analysis of lysates from PC12 cells, primary antibody was diluted at 1:1000, 4°C overnight

Storage

-20°C for 1 year