

NU2M Polyclonal Antibody

Description

Product type	Primary Antibody
Code	BT-AP12061
Host	Rabbit
Isotype	IgG
Size	20ul, 50ul, 100ul
Immunogen	Synthesized peptide derived from human protein . at AA range: 40-120
Mol wt	N/A
Species reactivity	Human, Rat, Mouse
Clonality	Polyclonal
Recommended application	WB, ELISA
Concentration	1 mg/ml
Full name	NADH-ubiquinone oxidoreductase chain 2
Synonyms	NADH-ubiquinone oxidoreductase chain 2 ;EC 1.6.5.3;NADH dehydrogenase subunit 2

This product is for research use only, not for use in human, therapeutic or diagnostic procedure.

Background

Catalytic activity:NADH + ubiquinone = NAD(+) + ubiquinol.,disease:Defects in MT-ND2 are a cause of Leber hereditary optic neuropathy (LHON)

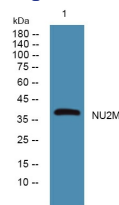
Recommended Dilution

WB: 1: 500 - 1: 2000

ELISA: 1: 5000 - 1: 20000

Not yet tested in other applications.

Images



Western blot analysis of lysates from SH-SY5Y cells, primary antibody was diluted at 1:1000, 4°C overnight

Storage

-20°C for 1 year