

NUDC(Phospho Ser326) Polyclonal Antibody

Description

Product type	Primary Antibody
Code	BT-AP12072
Host	Rabbit
Isotype	IgG
Size	20ul, 50ul, 100ul
Immunogen	The antiserum was produced against synthesized peptide derived from human NudC around the phosphorylation site of Ser326. AA range:282-331
Mol wt	38243
Species reactivity	Human, Mouse, Rat
Clonality	Polyclonal
Recommended application	WB, IHC-p, IF, ELISA
Concentration	1 mg/ml
Full name	Nuclear migration protein nudC
Synonyms	Nuclear migration protein nudC; NUDC; Nuclear migration protein nudC; Nuclear distribution protein C homolog

This product is for research use only, not for use in human, therapeutic or diagnostic procedure.

Background

This gene encodes a nuclear distribution protein that plays an essential role in mitosis and cytokinesis. The encoded protein is involved in spindle formation during mitosis and in microtubule organization during cytokinesis. Pseudogenes of this gene are found on chromosome 2.

Recommended Dilution

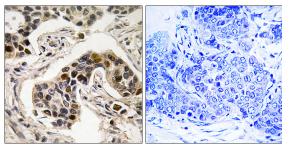
WB: 1: 500 - 1: 2000

IHC-p: 1: 100 - 1: 300

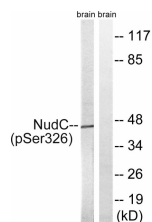
ELISA: 1: 5000

Not yet tested in other applications.

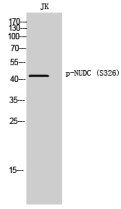
Images



Immunohistochemistry analysis of paraffin-embedded human breast carcinoma, using NudC (Phospho-Ser326) Antibody. The picture on the right is blocked with the phospho peptide.



Western Blot analysis of JK cells using Phospho-NUDC (S326) Polyclonal Antibody



Western blot analysis of lysates from rat brain, using NudC (Phospho-Ser326) Antibody. The lane on the right is blocked with the phospho peptide.

Storage

-20°C for 1 year

501 Changsheng S Rd, Nanhu Dist, Jiaxing, Zhejiang, China

Tel: 86 21 31007137 | E-mail: save@bt-laboratory.com | www.bt-laboratory.com