

NUT Polyclonal Antibody

Description

Product type	Primary Antibody
Code	BT-AP12083
Host	Rabbit
Isotype	IgG
Size	20ul, 50ul, 100ul
Immunogen	Synthesized peptide derived from human NUT. at AA range: 1082-1131
Mol wt	N/A
Species reactivity	Human, Rat, Mouse
Clonality	Polyclonal
Recommended application	WB, ELISA
Concentration	1 mg/ml
Full name	NUT
Synonyms	NUT; Protein NUT; Nuclear protein in testis

This product is for research use only, not for use in human, therapeutic or diagnostic procedure.

Background

A chromosomal aberration involving NUT is found in a rare, aggressive, and lethal carcinoma arising in midline organs of young people. Translocation t(15;19)(q14;p13) with BRD4 which produces a BRD4-NUT fusion protein.,disease:A chromosomal aberration involving NUT is found in a rare, aggressive, and lethal carcinoma arising in midline organs of young people. Translocation t(15;9)(q14;q34) with BRD3 which produces a BRD3-NUT fusion protein.,PTM:Phosphorylation on Ser-1026, Ser-1029 or Ser-1031 is important for cytoplasmic export.,Belongs to the FAM22 family.,subcellular location:Shuttles between nucleus and cytoplasm.,tissue specificity:Specifically expressed in testis.,

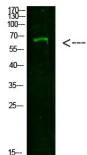
Recommended Dilution

WB: 1: 500 - 1: 2000

ELISA: 1: 10000 - 1: 20000

Not yet tested in other applications.

Images



Western Blot analysis of 293T cells using primary antibody diluted at 1:1000(4°C overnight). Secondary antibody:Goat Anti-rabbit IgG IRDye 800(diluted at 1:5000, 25°C, 1 hour)

Storage

-20°C for 1 year