

## PPIL1 Rabbit Polyclonal Antibody

### Description

Product type	Primary Antibody
Code	BT-AP12085
Host	Rabbit
Isotype	IgG
Size	20ul, 50ul, 100ul
Immunogen	Synthesized peptide derived from human PPIL1
Mol wt	18260
Species reactivity	Human, Mouse
Clonality	Polyclonal
Recommended application	WB
Concentration	1 mg/ml
Full name	PPIL1
Synonyms	PPIL1

This product is for research use only, not for use in human, therapeutic or diagnostic procedure.

### Background

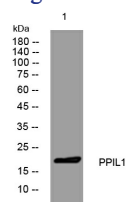
This gene is a member of the cyclophilin family of peptidylprolyl isomerases (PPIases). The cyclophilins are a highly conserved| ubiquitous family| members of which play an important role in protein folding| immunosuppression by cyclosporin A| and infection of HIV-1 virions. Based on similarity to other PPIases| this protein could accelerate the folding of proteins and might catalyze the cis-trans isomerization of proline imidic peptide bonds in oligopeptides.

### Recommended Dilution

WB: 1: 500 - 1: 2000

Not yet tested in other applications.

### Images



Western blot analysis of lysates from HEK293 cells, primary antibody was diluted at 1:1000, 4°C overnight

### Storage

-20°C for 1 year