

NXPH2 Polyclonal Antibody

Description

| | |
|--------------------------------|---|
| Product type | Primary Antibody |
| Code | BT-AP12086 |
| Host | Rabbit |
| Isotype | IgG |
| Size | 20ul, 50ul, 100ul |
| Immunogen | Synthesized peptide derived from human protein . at AA range: 140-220 |
| Mol wt | N/A |
| Species reactivity | Human, Mouse |
| Clonality | Polyclonal |
| Recommended application | WB, ELISA |
| Concentration | 1 mg/ml |
| Full name | Neurexophilin-2 |
| Synonyms | Neurexophilin-2 |

This product is for research use only, not for use in human, therapeutic or diagnostic procedure.

Background

May be signaling molecules that resemble neuropeptides and that act by binding to alpha-neurexins and possibly other receptors .,PTM:May be proteolytically processed at the boundary between the N-terminal non-conserved and the central conserved domain in neuron-like cells.,Belongs to the neurexophilin family.,tissue specificity:Expressed in brain and kidney.,

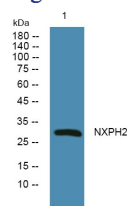
Recommended Dilution

WB: 1: 500 - 1: 2000

ELISA: 1: 5000 - 1: 20000

Not yet tested in other applications.

Images



Western blot analysis of lysates from HCT116 cells, primary antibody was diluted at 1:1000, 4°C overnight

Storage

-20°C for 1 year