

OAT1 Polyclonal Antibody

Description

Product type	Primary Antibody
Code	BT-AP12160
Host	Rabbit
Isotype	IgG
Size	20ul, 50ul, 100ul
Immunogen	The antiserum was produced against synthesized peptide derived from the N-terminal region of human SLC22A6. AA range:41-90
Mol wt	61930
Species reactivity	Human, Rat, Mouse
Clonality	Polyclonal
Recommended application	WB, ELISA
Concentration	1 mg/ml
Full name	Solute carrier family 22 member 6
Synonyms	Solute carrier family 22 member 6; SLC22A6; OAT1; PAHT; Solute carrier family 22 member 6; Organic anion transporter 1; hOAT1; PAH transporter; hPAHT; Renal organic anion transporter 1; hROAT1

This product is for research use only, not for use in human, therapeutic or diagnostic procedure.

Background

Solute carrier family 22 member 6 encoded by SLC22A6 is involved in the sodium-dependent transport and excretion of organic anions, some of which are potentially toxic. The encoded protein is an integral membrane protein and may be localized to the basolateral membrane. Four transcript variants encoding four different isoforms have been found for this gene.

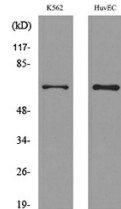
Recommended Dilution

WB: 1: 500 - 1: 2000

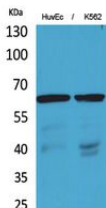
ELISA: 1: 20000

Not yet tested in other applications.

Images



Western Blot analysis of HuvEc, K562 cells using OAT1 Polyclonal Antibody. Secondary antibody was diluted at 1:20000



Western blot analysis of lysate from K562, HUVEC cells, using SLC22A6 Antibody.

Storage

-20°C for 1 year

501 Changsheng S Rd, Nanhu Dist, Jiaxing, Zhejiang, China

Tel: 86 21 31007137 | E-mail: save@bt-laboratory.com | www.bt-laboratory.com