

PRAM1 Rabbit Polyclonal Antibody

Description

Product type	Primary Antibody
Code	BT-AP12176
Host	Rabbit
Isotype	IgG
Size	20ul, 50ul, 100ul
Immunogen	Synthesized peptide derived from human PRAM1
Mol wt	52140
Species reactivity	Human, Rat, Mouse
Clonality	Polyclonal
Recommended application	WB
Concentration	1 mg/ml
Full name	PRAM1
Synonyms	PRAM1

This product is for research use only, not for use in human, therapeutic or diagnostic procedure.

Background

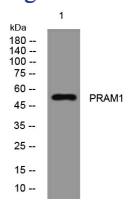
This gene is a member of the PRAME (preferentially expressed antigen of melanoma) gene family which is expressed in many cancers but may function in reproductive tissues during development. Alternative promoter usage generates two transcript variants| which encode different isoforms.

Recommended Dilution

WB: 1: 500 - 1: 2000

Not yet tested in other applications.

Images



Western blot analysis of lysates from A431 cells, primary antibody was diluted at 1:1000, 4°C overnight

Storage

-20°C for 1 year

501 Changsheng S Rd, Nanhu Dist, Jiaxing, Zhejiang, China

Tel: 86 21 31007137 | E-mail: save@bt-laboratory.com | www.bt-laboratory.com