

PRAS40(Phospho-Ser183) Rabbit Polyclonal Antibody

Description

Product type	Primary Antibody
Code	BT-AP12181
Host	Rabbit
Isotype	IgG
Size	20ul, 50ul, 100ul
Immunogen	Synthesized phospho peptide around human PRAS40 (Ser183)
Mol wt	N/A
Species reactivity	Human, Mouse
Clonality	Polyclonal
Recommended application	WB
Concentration	1 mg/ml
Full name	PRAS40
Synonyms	PRAS40 ;Ser183; Proline-rich AKT1 substrate 1; 40 kDa proline-rich AKT substrate

This product is for research use only, not for use in human, therapeutic or diagnostic procedure.

Background

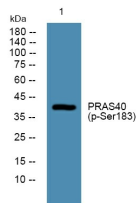
AKT1S1 is a proline-rich substrate of AKT (MIM 164730) that binds 14-3-3 protein (see YWHAH| MIM 113508) when phosphorylated (Kovacina et al. 2003)

Recommended Dilution

WB: 1: 1000 - 1: 2000

Not yet tested in other applications.

Images



Western blot analysis of lysates from U2OS cells, primary antibody was diluted at 1:1000, 4°C overnight

Storage

-20°C for 1 year

501 Changsheng S Rd, Nanhu Dist, Jiaxing, Zhejiang, China

Tel: 86 21 31007137 | E-mail: save@bt-laboratory.com | www.bt-laboratory.com