

PRB2 Rabbit Polyclonal Antibody

Description

Product type	Primary Antibody
Code	BT-AP12182
Host	Rabbit
Isotype	IgG
Size	20ul, 50ul, 100ul
Immunogen	Synthesized peptide derived from human PRB2
Mol wt	45760
Species reactivity	Human, Rat, Mouse
Clonality	Polyclonal
Recommended application	WB
Concentration	1 mg/ml
Full name	PRB2
Synonyms	PRB2

This product is for research use only, not for use in human, therapeutic or diagnostic procedure.

Background

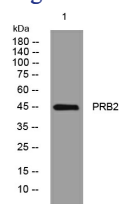
This gene encodes a member of the heterogeneous family of basic| proline-rich| human salivary glycoproteins. The encoded preproprotein undergoes proteolytic processing to generate one or more mature isoforms before secretion from the parotid glands. Multiple alleles of this gene exhibiting variations in the length of the tandem repeats| polymorphic cleavage sites and polymorphic stop codons have been identified. This gene is located in a cluster of closely related salivary proline-rich proteins on chromosome 12.

Recommended Dilution

WB: 1: 500 - 1: 2000

Not yet tested in other applications.

Images



Western blot analysis of lysates from MDA-MB cells, primary antibody was diluted at 1:1000, 4°C overnight

Storage

-20°C for 1 year