

PRDM2 Rabbit Polyclonal Antibody

Description

Product type	Primary Antibody
Code	BT-AP12183
Host	Rabbit
Isotype	IgG
Size	20ul, 50ul, 100ul
Immunogen	Synthesized peptide derived from human PRDM2
Mol wt	188980
Species reactivity	Human, Rat
Clonality	Polyclonal
Recommended application	WB
Concentration	1 mg/ml
Full name	PRDM2
Synonyms	PRDM2

This product is for research use only, not for use in human, therapeutic or diagnostic procedure.

Background

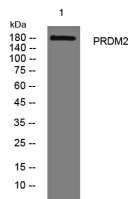
This tumor suppressor gene is a member of a nuclear histone/protein methyltransferase superfamily. It encodes a zinc finger protein that can bind to retinoblastoma protein| estrogen receptor| and the TPA-responsive element (MTE) of the heme-oxygenase-1 gene. Although the functions of this protein have not been fully characterized| it may (1) play a role in transcriptional regulation during neuronal differentiation and pathogenesis of retinoblastoma| (2) act as a transcriptional activator of the heme-oxygenase-1 gene| and (3) be a specific effector of estrogen action. Multiple transcript variants encoding different isoforms have been found for this gene.

Recommended Dilution

WB: 1: 500 - 1: 2000

Not yet tested in other applications.

Images



Western blot analysis of lysates from A431 cells, primary antibody was diluted at 1:1000, 4°C overnight

Storage

-20°C for 1 year