

## PRGC2 Rabbit Polyclonal Antibody

### Description

Product type	Primary Antibody
Code	BT-AP12191
Host	Rabbit
Isotype	IgG
Size	20ul, 50ul, 100ul
Immunogen	Synthesized peptide derived from human PRGC2
Mol wt	112530
Species reactivity	Human, Mouse, Rat
Clonality	Polyclonal
Recommended application	WB
Concentration	1 mg/ml
Full name	PRGC2
Synonyms	PRGC2

This product is for research use only, not for use in human, therapeutic or diagnostic procedure.

### Background

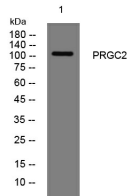
The protein encoded by this gene stimulates the activity of several transcription factors and nuclear receptors| including estrogen receptor alpha| nuclear respiratory factor 1| and glucocorticoid receptor. The encoded protein may be involved in fat oxidation| non-oxidative glucose metabolism| and the regulation of energy expenditure. This protein is downregulated in prediabetic and type 2 diabetes mellitus patients. Certain allelic variations in this gene increase the risk of the development of obesity. Three transcript variants encoding different isoforms have been found for this gene.

### Recommended Dilution

WB: 1: 500 - 1: 2000

Not yet tested in other applications.

### Images



Western blot analysis of lysates from HeLa cells, primary antibody was diluted at 1:1000, 4°C overnight

### Storage

-20°C for 1 year