

PSB11 Rabbit Polyclonal Antibody

Description

Product type	Primary Antibody
Code	BT-AP12200
Host	Rabbit
Isotype	IgG
Size	20ul, 50ul, 100ul
Immunogen	Synthesized peptide derived from human PSB11
Mol wt	33000
Species reactivity	Human, Mouse
Clonality	Polyclonal
Recommended application	WB
Concentration	1 mg/ml
Full name	PSB11
Synonyms	PSB11

This product is for research use only, not for use in human, therapeutic or diagnostic procedure.

Background

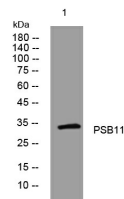
Proteasomes generate peptides that are presented by major histocompatibility complex (MHC) I molecules to other cells of the immune system. Proteolysis is conducted by 20S proteasomes| complexes of 28 subunits arranged as a cylinder in 4 heteroheptameric rings: alpha-1 to -7| beta-1 to -7| beta-1 to -7| and alpha-1 to -7. The catalytic subunits are beta-1 (PSMB6; MIM 600307)| beta-2 (PSMB7; MIM 604030)| and beta-5 (PSMB5; MIM 600306). Three additional subunits| beta-1i (PSMB9; MIM 177045)| beta-2i (PSMB10; MIM 176847)| and beta-5i (PSMB8; MIM 177046)| are induced by gamma-interferon (IFNG; MIM 147570) and are preferentially incorporated into proteasomes to make immunoproteasomes. PSMB11| or beta-5t| is a catalytic subunit expressed exclusively in cortical thymic epithelial cells (Murata et al., 2007)

Recommended Dilution

WB: 1: 500 - 1: 2000

Not yet tested in other applications.

Images



Western blot analysis of lysates from MDA-MB cells, primary antibody was diluted at 1:1000, 4°C overnight

Storage

-20°C for 1 year