

PSMD8 Rabbit Polyclonal Antibody

Description

Product type	Primary Antibody
Code	BT-AP12202
Host	Rabbit
Isotype	IgG
Size	20ul, 50ul, 100ul
Immunogen	Synthesized peptide derived from human PSMD8
Mol wt	38500
Species reactivity	Human, Mouse
Clonality	Polyclonal
Recommended application	WB
Concentration	1 mg/ml
Full name	PSMD8
Synonyms	PSMD8

This product is for research use only, not for use in human, therapeutic or diagnostic procedure.

Background

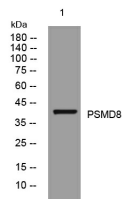
The 26S proteasome is a multicatalytic proteinase complex with a highly ordered structure composed of 2 complexes| a 20S core and a 19S regulator. The 20S core is composed of 4 rings of 28 non-identical subunits; 2 rings are composed of 7 alpha subunits and 2 rings are composed of 7 beta subunits. The 19S regulator is composed of a base| which contains 6 ATPase subunits and 2 non-ATPase subunits| and a lid| which contains up to 10 non-ATPase subunits. Proteasomes are distributed throughout eukaryotic cells at a high concentration and cleave peptides in an ATP/ubiquitin-dependent process in a non-lysosomal pathway. An essential function of a modified proteasome| the immunoproteasome| is the processing of class I MHC peptides. This gene encodes a non-ATPase subunit of the 19S regulator. A pseudogene has been identified on chromosome 1.

Recommended Dilution

WB: 1: 500 - 1: 2000

Not yet tested in other applications.

Images



Western blot analysis of lysates from SW480 cells, primary antibody was diluted at 1:1000, 4°C overnight

Storage

-20°C for 1 year