

Olfactory Receptor 10X1 Polyclonal Antibody

Description

Product type	Primary Antibody
Code	BT-AP12216
Host	Rabbit
Isotype	IgG
Size	20ul, 50ul, 100ul
Immunogen	The antiserum was produced against synthesized peptide derived from human OR10X1. AA range:216-265
Mol wt	27777
Species reactivity	Human, Rat, Mouse
Clonality	Polyclonal
Recommended application	WB, IF, ICC, ELISA
Concentration	1 mg/ml
Full name	Olfactory receptor 10X1
Synonyms	Olfactory receptor 10X1

This product is for research use only, not for use in human, therapeutic or diagnostic procedure.

Background

Olfactory receptors interact with odorant molecules in the nose, to initiate a neuronal response that triggers the perception of a smell. The olfactory receptor proteins are members of a large family of G-protein-coupled receptors (GPCR) arising from single coding-exon genes. Olfactory receptors share a 7-transmembrane domain structure with many neurotransmitter and hormone receptors and are responsible for the recognition and G protein-mediated transduction of odorant signals. The olfactory receptor gene family is the largest in the genome. The nomenclature assigned to the olfactory receptor genes and proteins for this organism is independent of other organisms. This olfactory receptor gene is a segregating pseudogene, where some individuals have an allele that encodes a functional olfactory receptor, while other individuals have an allele encoding a

Recommended Dilution

WB: 1: 500 - 1: 2000

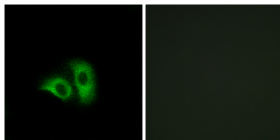
IF: 1: 200 - 1: 1000

ICC: 1: 200 - 1: 1000

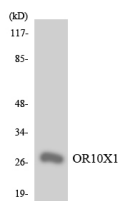
ELISA: 1: 40000

Not yet tested in other applications.

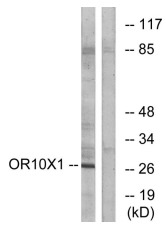
Images



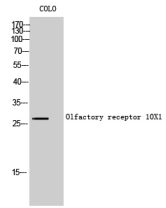
Immunofluorescence analysis of A549 cells, using OR10X1 Antibody. The picture on the right is blocked with the synthesized peptide.



Western Blot analysis of COLO cells using Olfactory receptor 10X1 Polyclonal Antibody



Western blot analysis of lysates from COLO cells, using OR10X1 Antibody. The lane on the right is blocked with the synthesized peptide.



Western blot analysis of the lysates from Jurkat cells using OR10X1 antibody.

Storage

-20°C for 1 year

501 Changsheng S Rd, Nanhu Dist, Jiaxing, Zhejiang, China

Tel: 86 21 31007137 | E-mail: save@bt-laboratory.com | www.bt-laboratory.com